

eCopy ShareScan Demo Activator

Run the installation

Prerequisite: In order to demonstrate the ShareScan connectors in demo mode you will require ShareScan version 6.x with a valid Full, Evaluation or NFR license.

The available connector simulators include:

Documentum Content Server

OpenText eDOCS

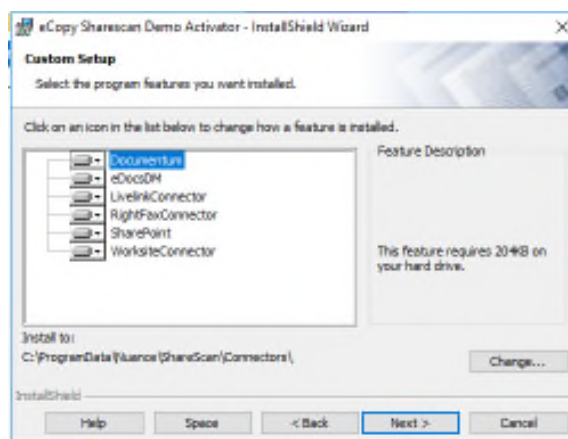
OpenText Content Server, Livelink

OpenText Fax, RightFax

Microsoft SharePoint

Autonomy iManage WorkSite

If only a specific connector is desired select custom install and by clicking on each connector you can choose which connectors to exclude from installing the demo mode.



Once the installer has completed you will need to configure each connector to run using the simulated information.

Technical Note: The corresponding connector demo xml files are located in the corresponding directory based on your version of windows

Win7: <C:\ProgramData\Nuance\ShareScan\Connectors\LivelinkConnector\Data>

For many of these connectors the XML files can be modified to tailor the displayed folders and metadata to replicate your user environment. If you choose to modify this XML, save a backup of the original file.

eCopy ShareScan Demo Activator

Connector Configuration:

OpenText Content Server, Livelink:

- 1) To Configure the OpenText Content Server, Livelink Connector, open the eCopy ShareScan Administration Console and select the “Open Text Content Server” connector in the connector pane.
- 2) Select “New”
- 3) Give the destination any name that applies to the configuration.
- 4) The following information needs to be entered in order to configure the connector:
 - a. Livelink Server: *Livelink*
 - b. Database: *LivelinkDB*
 - c. User Name: *johndoe*
 - d. Password: *password*
- 5) Select “Test” to test the configuration. Once the test is successful, save the configuration by clicking on the save as ICON and give the configuration an appropriate name. The connector is now configured and ready to add to a device.

Modify Destination

Navigation & Attributes | Express mode | Database & Authentication

Connection

Name: test

Livelink server: Livelink

Database: LivelinkDB

Port: 2099

Login Mode

☐ Login as

☒ Login at runtime

Search while typing: Enabled, using server user list

Authentication

User Name: johndoe

Password:

This information will be used for testing the Livelink connection, browsing the Livelink folders in the Admin UI, and for querying the list of Livelink users for the 'Search while typing' feature.

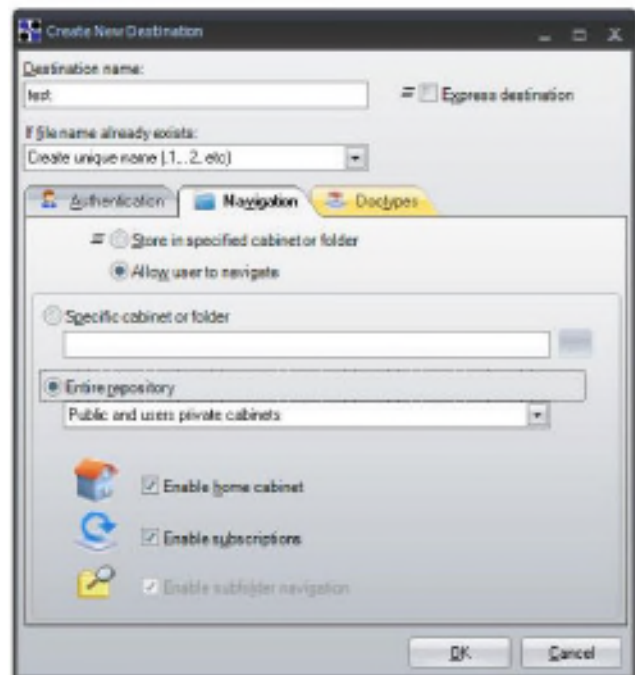
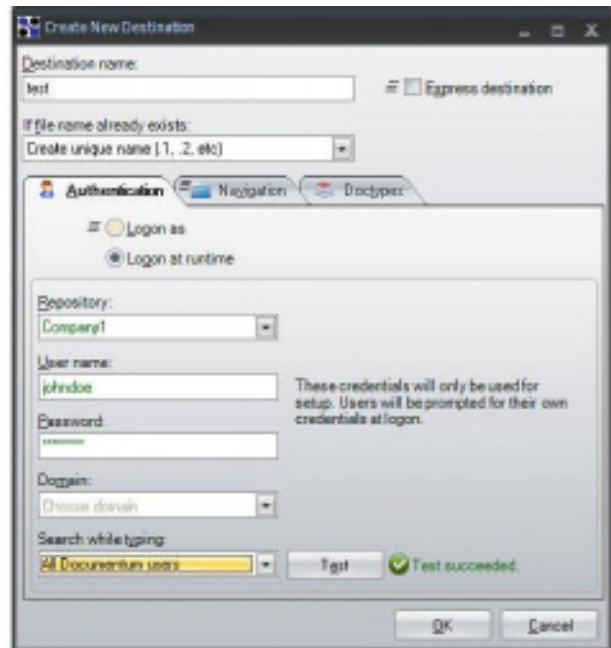
Test succeeded.

Test OK Cancel

eCopy ShareScan Demo Activator

EMC Documentum Content Server:

- 1) To Configure the Documentum Content Server connector open the eCopy ShareScan Administration Console and select the “Documentum” connector in the connector pane.
- 2) Select “New”
- 3) Give the destination any name that applies to the configuration.
- 4) The following information needs to be entered in order to configure the connector:
 - a. Company: *Company1*
 - b. User Name: *johnndoe*
 - c. Password: *password*
- 5) Uncheck “Express Destination” and select the radio button “Logon a Runtime” to display the authentication form and select “All Documentum users” under the Search while typing.
- 6) Select “Test” to test the configuration.
- 7) Click on the Navigation tab and select “Allow user to navigate” and below select “Entire Repository” This configures the connector to show the full navigation option.
- 8) Click on the Doctype tab and click on “New” and select a doctype to configure. This will bring up the “Attributes” window which allows you to check which attributes to display to the user, which are required, which are user modifiable, set the order of display and set default values.
- 9) Once the test is successful and you have configured which attributes to show, click OK and then save the configuration by clicking on the save as ICON and give the configuration an appropriate name. The connector is now configured and ready to add to a device.

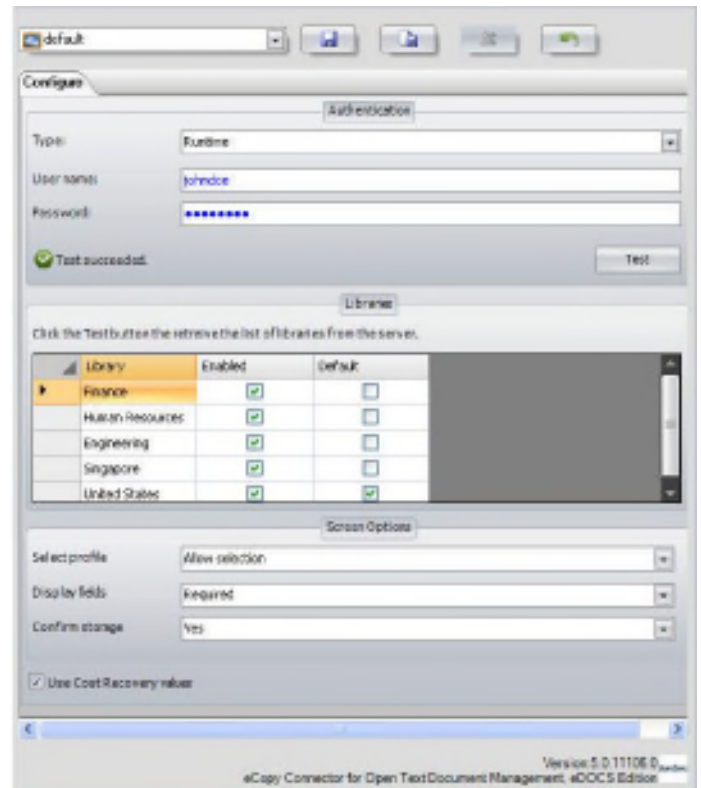


eCopy ShareScan Demo Activator

OpenText eDOCS:

- 1) To Configure the OpenText Content Server, Livelink Connector, open the eCopy ShareScan Administration Console and select the “Open Text Content Server” connector in the connector pane.
- 2) Select “New”
- 3) Give the destination any name that applies to the configuration.
- 4) The following information needs to be entered in order to configure the connector:
 - a. User Name: *john doe*
 - b. Password: *password*
- 5) Select “Test” to test the configuration.

Once the test is successful, save the configuration by clicking on the save as ICON and give the configuration an appropriate name. The connector is now configured and ready to add to a device.



SharePoint: requires the url <http://demosharepoint>